



Refrigerated Air Dryers



QUINCY QPNC SERIES | NON-CYCLING
QUINCY QRHT SERIES | HIGH TEMP



REFRIGERATED AIR DRYERS

NON-CYCLING DESIGNS FOR MAXIMUM SYSTEM EFFICIENCY

NON-CYCLING DRYERS 10 TO 3000 CFM

Quincy refrigerated air dryers are manufactured to exact standards in state-of-the-art production facilities, featuring high capacity, balanced component selection and consistent output. This, combined with a clean, simple design, creates an efficient, reliable and environmentally friendly non cycling refrigerated air dryer.

Quincy refrigerated air dryers allow plant equipment to run efficiently, and processes more reliably, by providing the cleanest compressed air utility possible. Payback starts immediately upon start up.



ENVIRONMENTALLY SAFE REFRIGERANTS

- No CFC's or HCFC's
- EPA/SNAP Compliant
- Zero Ozone Depletion Potential (ODP)
- Qualifies for one LEED point
- Higher performance potential
- Higher efficiency potential



QPNC — NON-CYCLING DRYER OPERATION

Quincy Non-Cycling dryers use a two-stage heat exchanger system to maintain consistent dew points. Freeze-ups are prevented and optimum performance is maintained by integrating the highest quality components and refrigeration controls into our system.

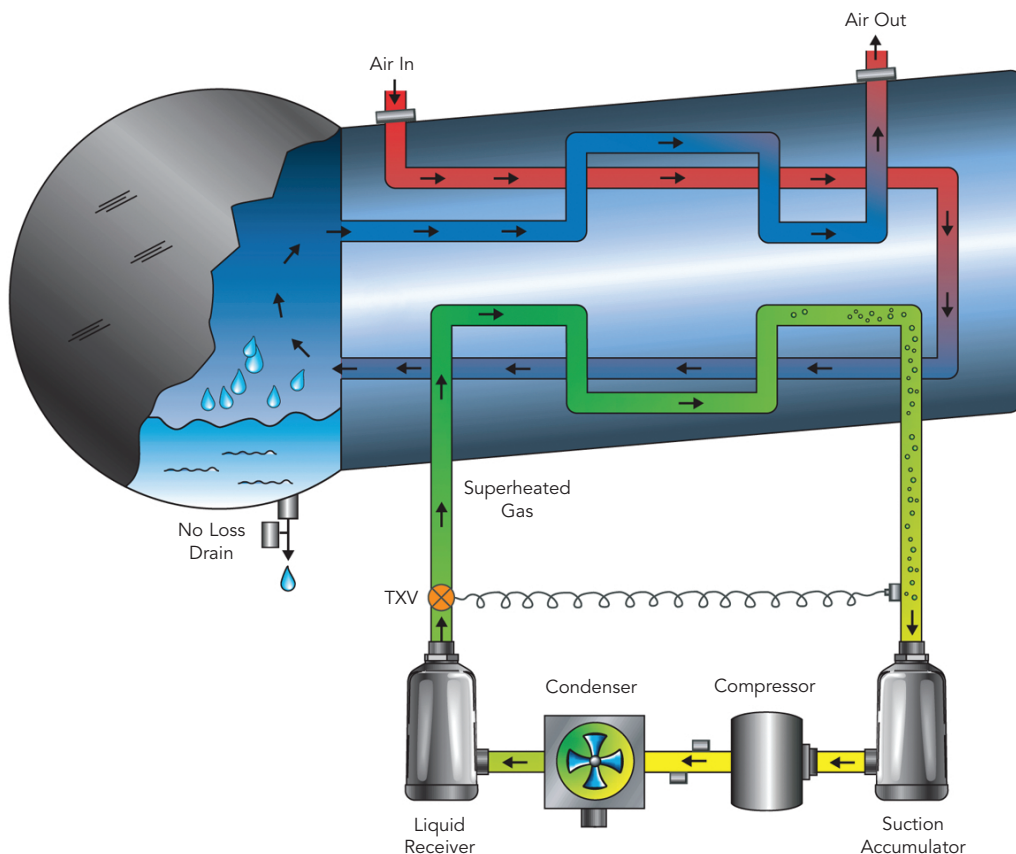
The system reduces the temperature of the compressed air to approx. +39°F forcing entrained moisture to condense. The mixture of condensed liquids and cold air then flow into the cold point moisture separator where the liquids are col-

lected and removed by a Zero Loss condensate drain. The Zero Loss drain ensures maximum moisture removal while saving energy.

Once liquids have been removed, the cold dry compressed air returns through the cold side of the first stage heat exchanger where it is reheated by the warm incoming air. Pipe sweating is avoided and air volume is increased by reheating.

The compressed air is now considered treated and ready for delivery to downstream products.

Non-Cycling Flow Schematic



REFRIGERATED AIR DRYERS

EASE OF OPERATION

Non-cycling Control Panel 10–250 cfm



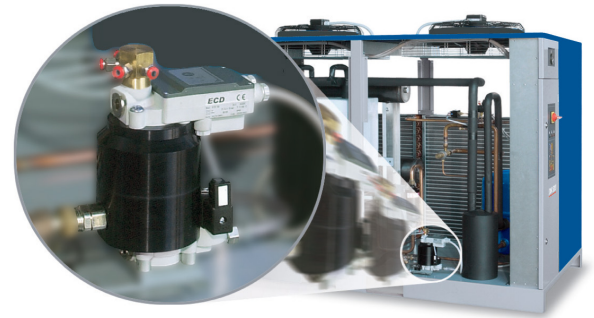
Non-cycling Control Panel 360–3000 cfm



- Refrigerant System Flow
- Run & Alarm Indicator Lights
- Analyzer Gauge
- Schematic
- Stop / Start Switch with Lock Out

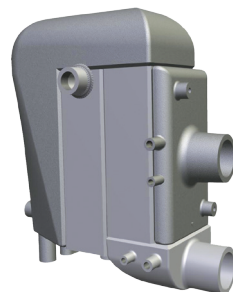
SAVING ENERGY

Quincy QPNC dryers from 10 to 3000 cfm come standard with the most energy efficient ZERO LOSS DRAINS.



HEAT EXCHANGERS & MOISTURE SEPARATORS

- Low pressure drop
- Cold Air Module (QPNC 75 -3000)
- Brazen Plate (QPNC 10 - 50)
- Integrated Moisture Separator
- Five step centrifugal separation
- 10-Year Heat Exchanger Warranty



QPNC — SPECIFICATIONS & ENGINEERING DATA

Non-Cycling		Standard Electrics			Pressure		Dimensions			Approximate Shipping	Connections	Refrigerant
Model	cfm @ 100 psig	m ³ /hr 7 bar	Volts/Phase Hertz	Full Load kW	Max psig	Nominal ΔP	L In.	W In.	H In.	Wt. lb.	In/Out	Gas
QPNC 10	10	17	115/1/60	0.2	230	1.5	21	14	20	57	0.5" NPT (M)	R134a
QPNC 15	15	25	115/1/60	0.2	230	2.2	21	14	20	59	0.5" NPT (M)	R134a
QPNC 25	25	42	115/1/60	0.3	230	2.9	21	14	20	70	0.5" NPT (M)	R134a
QPNC 35	35	59	115/1/60	0.3	230	2.9	21	14	20	75	0.5" NPT (M)	R134a
QPNC 50	50	85	115/1/60	0.4	230	2.9	21	14	20	75	0.5" NPT (M)	R134a
QPNC 75	75	127	115/1/60	0.7	230	2.9	23	18	31	112	1" NPT (F)	R404A
QPNC 100	100	170	115/1/60	0.9	200	2.2	25	19	32	134	1.5" NPT (F)	R404A
QPNC 125	125	212	115/1/60	1.0	200	2.9	25	19	32	150	1.5" NPT (F)	R404A
QPNC 150	150	255	208-230/1/60	1.5	200	1.5	26	23	36	198	1.5" NPT (F)	R404A
QPNC 200	200	340	208-230/1/60	1.6	200	2.9	26	23	36	198	1.5" NPT (F)	R404A
QPNC 250	250	425	460/3/60	1.9	200	3.6	26	23	36	198	1.5" NPT (F)	R404A
QPNC 300	300	510	460/3/60	2.3	188	3.6	38	29	40	282	2" NPT (F)	R410A
QPNC 360	360	612	460/3/60	2.6	188	4.3	38	29	40	322	2.5" NPT (F)	R410A
QPNC 500	500	850	460/3/60	3.2	188	4.3	38	29	40	348	2.5" NPT (F)	R410A
QPNC 600	600	1020	460/3/60	4.3	188	4.3	38	29	40	364	2.5" NPT (F)	R410A
QPNC 750	750	1275	460/3/60	5.4	188	3.6	41	41	61	717	3" NPT (M)	R404A
QPNC 1000	1000	1700	460/3/60	5.8	188	4.3	41	41	61	739	3" NPT (M)	R404A
QPNC 1250	1250	2125	460/3/60	7.3	188	5.0	41	41	61	772	3" NPT (M)	R404A
QPNC 1600	1600	2720	460/3/60	12.7	188	4.3	41	41	61	812	3" NPT (M)	R404A
QPNC 1800	1800	3060	460/3/60	13.7	188	4.3	41	83	61	1235	6" Flange	R404A
QPNC 2200	2200	3740	460/3/60	19.2	188	3.6	41	83	61	1323	6" Flange	R404A
QPNC 2500	2500	4250	460/3/60	19.2	188	3.6	41	83	61	1323	6" Flange	R404A
QPNC 3000	3000	5097	460/3/60	22.3	188	3.7	41	83	61	1433	6" Flange	R404A

Notes: Capacity in accordance with recommended NFPA standards and CAGI standard ADF 100. Ratings based on 100°F inlet temperature, 100 psig inlet pressure and 100°F max ambient.

kW inputs are shown for air cooled models including fan motors.

CORRECTION FACTORS

Inlet Air Pressure Correction									
PSIG	60	80	100	120	140	150	180	200	
A QPNC 10 - 3000 Factor	0.79	0.93	1	1.03	1.07	1.09	1.12	1.14	

Ambient Air Temperature Correction				
Temp.°F	80	90	100	110
C QPNC 10 - 250 Factor	1.12	1.03	1	0.92
QPNC 325 - 3000 Factor	1.15	1.07	1	0.91

Inlet Air Temperature Correction				
Temp.°F	80	100	110	120
B QPNC 10 - 250 Factor	1.05	1	0.87	0.67
QPNC 325 - 3000 Factor	1.05	1	0.84	0.69

Dew Point Correction			
Temp.°F	37-39°F	45-50°F	
D QPNC 10 - 250 Factor	1	1.12	
QPNC 325 - 3000 Factor	1	1.2	

Example One: Conditions Requirement	
Capacity	480 cfm
Inlet Pressure	120 psig
Inlet Air Temp.	110°F
Ambient Temp.	100°F
Dew Point	39°F

Example One: Calculations	
Dryer Required	$= \frac{\text{cfm required}}{(A) \times (B) \times (C) \times (D)}$
	$= \frac{480}{(1.03) \times (.84) \times (1) \times (1)}$
	$= 555 \text{ cfm dryer required}$
Select QPNC 600 for this application	

Example Two: Conditions QPNC 500 Corrected Flow for:	
Inlet Pressure	120 psig
Inlet Air Temp.	110°F
Ambient Temp.	90°F
Dew Point	39°F

Example Two: Calculations	
Corrected Capacity	$= \text{Std. Capacity} \times (A) \times (B) \times (C) \times (D)$
	$= 500 \times (1.03) \times (.84) \times (1.07) \times (1)$
	$= 463 \text{ cfm}$



QPNC-25 Non-Cycling Dryer

REFRIGERATED AIR DRYERS

QRHT — HIGH TEMPERATURE REFRIGERATED DRYER

SPACE SAVING REFRIGERATED DRYER

QRHT Series Total Air System High Temperature Dryers integrate five different components that perform separate functions. An air-cooled aftercooler, refrigerated dryer, moisture separator, Zero Loss drain, and coalescing filter. These five components work in harmony to ensure clean dry, filtered compressed air.

- 180°F Inlet Temperature
- 3-in-1 Design
- Eliminates Water, Oil and Dirt from Air
- Prevents Damage to Pneumatic Tools
- Fewer Finished Product Defects
- Prevents “Fisheye” Paint Splotches
- Reduces Operational Downtime
- Increase Profitability and Productivity
- Eliminates Air Line Purging



QRHT — SPECIFICATIONS & ENGINEERING DATA

High Temperature		Power Consumption		Max	Refrigerant	Dimensions			Approx Wt. lb.	Connections In.
Model	cfm @ 100 psig	Voltage	Kw	psig		L In.	W In.	H In.		
QRHT 25	25	115/1/60	.4	232	R134a	20.4	13.8	17.7	57	1/2" NPT
QRHT 50	50	115/1/60	.8	232	R404A	22.6	18.1	31	108	1" NPT
QRHT 75	75	115/1/60	1.6	232	R404A	22.6	18.1	31	168	3/4" NPT
QRHT 100	100	115/1/60	1.7	232	R404A	22.6	18.1	41	231	3/4" NPT
QRHT 125	125	115/1/60	2.0	232	R404A	22.6	18.1	41	236	3/4" NPT

Notes: Instrumentation includes; On/off switch, refrigerant suction pressure gauge and drain test button. Coalescing filter is supplied for all models.

Inlet Flow SCFM		
Model	50°F PDP	40°F PDP
QRHT 25	25	20
QRHT 50	50	40
QRHT 75	75	60
QRHT 100	100	80
QRHT 125	125	100

SCFM flow is rated at 180°F max. inlet, 100 psig and 100°F ambient

THE QUINCY PROMISE

Quincy Compressor and its partnering distributors promise to provide you with uncompromising reliability in all Quincy equipment. This makes your compressed air system one less thing that you need to worry about, allowing you to focus on your company's productivity and profitability.



THE QUINCY SOLUTION

Operating at peak efficiency and providing quality product is a priority for many of our customers. Quincy Compressor in partnership with our global network of authorized distributors strives to be your provider for all of your compressed air system needs. From the air compressor to filtration to dryers and storage solutions, Quincy Compressor is your single source provider for all of your compressed air system needs.

Air Compressors

Quincy Compressor is a premier manufacturer of many different types of air compressors designed for a variety of applications using different compression technologies.

The **Quincy QT** is a Reciprocating Splash Lubricated compressor for tough everyday use. The **Quincy QP** is a reciprocating fully pressure lubricated compressor for a competitive advantage. The **Quincy QR** is a reciprocating compressor designed for the most demanding conditions. The **Quincy QGS 5-30 HP** is a heavy-duty belt driven rotary compressor at a competitive price. The **Quincy QSI** provides an industrial grade premium fixed speed rotary screw air compressor. The **Quincy QGV** provides a premium variable speed rotary screw air compressor designed to optimize your energy efficiency.

Compressed Air Treatment

Quincy Compressor is your single-source provider of compressed air treatment products to complement your air compressor. Quincy provides refrigerated air dryers, desiccant air dryers, compressed air filtration from 5 to .01 micron, condensate drains, condensate management systems, storage solutions, and flow control valves. Quincy Compressor is truly a single-source provider for all of your compressed air needs.

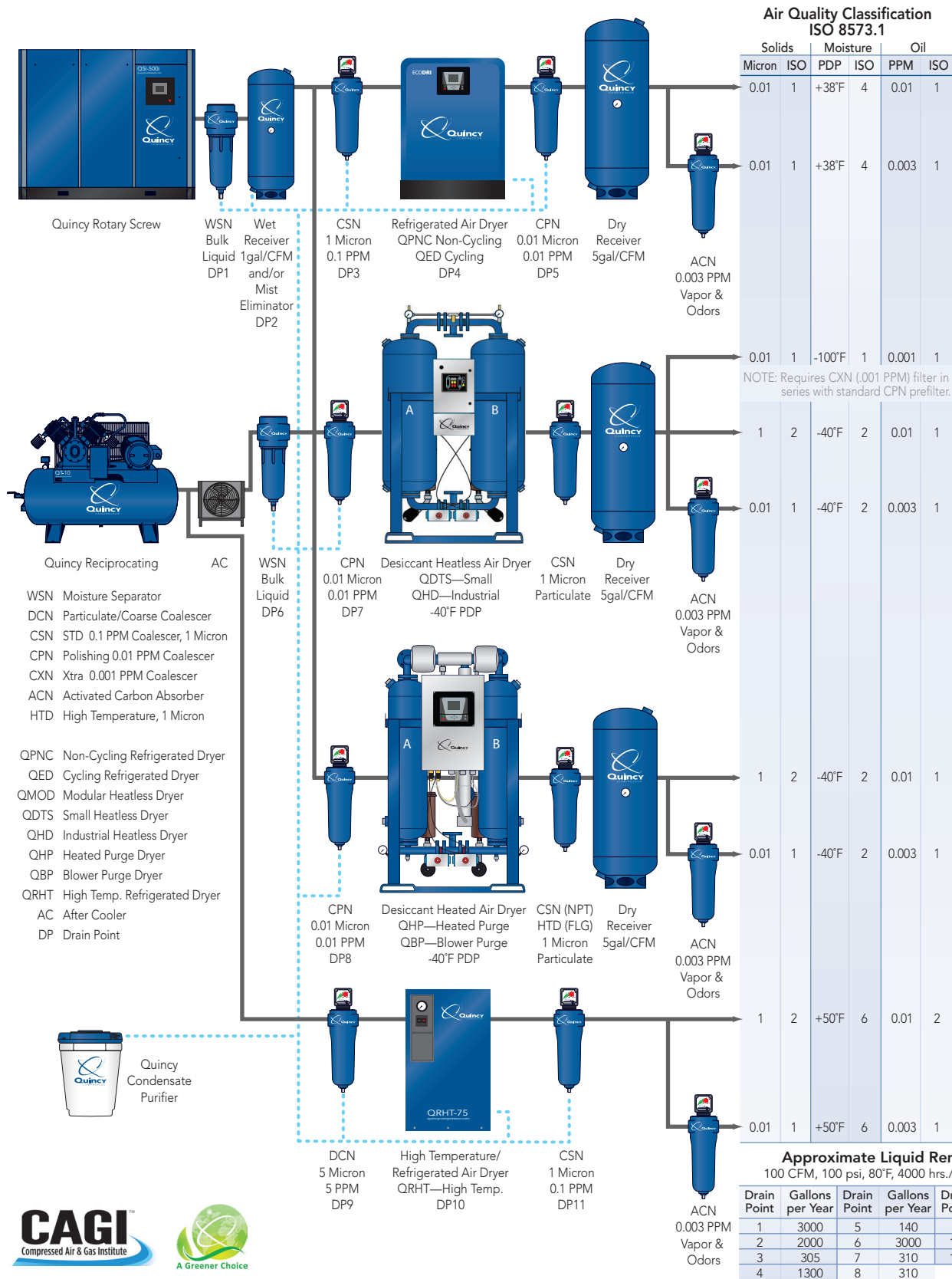
Genuine Parts

Genuine Parts from Quincy Compressor keep your equipment running like new. When servicing your Quincy compressor, insist on Genuine Quincy parts. Not only will you save time and money, but you will gain the peace-of-mind from using only the highest quality parts worthy of the Quincy name.

System Controls

Whether you have one air compressor or many air compressors from different manufacturers, Quincy Compressor provides you with a way to control and monitor all of your system components in your compressed air system in a way that maximizes your energy efficiency. Whether you need to control your system on site or from half way around the world, Quincy Compressor is your source for reliable, efficient controls.

COMPRESSED AIR SYSTEMS BEST PRACTICE



©2012 Quincy Compressor. All rights reserved. Printed in U.S.A. (QPRD-016 08/14)